



nurture

The Nurture Group

INTERIOR PLANT DISPLAYS

NURTURE LANDSCAPES:

WWW.NURTURELANDSCAPES.CO.UK

Nurture is an award winning national horticulture and landscape maintenance business, enhancing asset value and enriching the environment. Equally committed to its people and its clients as well as working sustainably.

Nurture has pioneered environmental initiatives to reduce carbon and improve energy efficiency. We work in collaboration with clients across the public and private sectors, maintaining assets to the highest standards of safety and quality.



CONTENTS:

CLICK ON THE PAGES BELOW

02 NURTURE LANDSCAPES

04 ADVANTAGES OF INTERIOR PLANTS

06 FLOOR STANDING | LOW LIGHT

20 FLOOR STANDING | MEDIUM LIGHT

36 FLOOR STANDING | HIGH LIGHT

52 LIVE FLOWERING DISPLAYS

72 DESKTOP DISPLAYS

82 CABINET PLANTERS

88 CACTUS CUBES

90 OUR SERVICES

ADVANTAGES:

INTERIOR PLANTING

5 WAYS HEALTHY PLANTING ENHANCES YOUR ENVIRONMENT:

INCREASE PRODUCTIVITY

Interior planting can help people to feel more relaxed and focused, which leads to an increase in creativity, idea generation and problem solving capabilities and overall productivity.

IMPROVE HEALTH

During a study based in Norway, when reviewing 12 of the common symptoms most often related to poor indoor air quality and 'sick building syndrome,' there was a 23% lower complaint rate during the period when the participants had plants in their offices.

DETOXIFY

Plants oxygenate the air and a variety of well placed plants or an entire green wall will have a marked effect on the internal environment.

WELL-BEING

Living in urban environments, we are surrounded by concrete, traffic, noise and pollution. This is not healthy. It has a profound impact on our physical and mental wellness. Greenery softens this hard environment, acting as a tonic to ease stress and fatigue.

COOLING INTERIORS

Plants possess a natural ability to draw their system towards a light source, which can act as an indoor awning. The need for alternative means of shading can be eliminated while maintaining the valuable natural view. This multi-purpose method of shading becomes much more cost-effective than alternative engineered products.




[CLICK HERE TO READ MORE](#)

Wavy Bowls (black cracked tab shell):
Planted with *Rhipsalis cassutha*
05-A1



“INTERIOR PLANTING HELPS PEOPLE TO FEEL MORE RELAXED AND FOCUSED, WHICH LEADS TO AN INCREASE IN CREATIVITY, IDEA GENERATION, PROBLEM SOLVING CAPABILITIES AND OVERALL PRODUCTIVITY.”



Elho pure divider (anthracite):
Planted with *Dracaena deremensis*
06-A1

LOW LIGHT | FLOOR STANDING:

INTERIOR PLANTING

Nurture Landscapes offer the widest range of ways to incorporate planting into a working space from traditional plants in planters, insitu planting, green walls and a wide range of more innovative solutions for improving the working environment and what's more we can supply them anywhere in the UK.

We'll help you choose exactly the right combination for your space, and make sure they're expertly looked after. Nurture Landscapes' trained technicians visit at regular intervals to ensure your planting is kept operating at optimum efficiency.

Some of the most bright and easy-care indoor plants thrive in low-light conditions. Use them to add colour and life to your reception and offices.

Check out our interior planting displays for dark rooms [here](#).

LOW LIGHT | FLOOR STANDING

INTERIOR PLANTING



Twist quart-round planters:
Planted with *Aglaonema* 'green light'
08-A1



Star planter:
Planted with *Aspidistra elatior*
08-A2



Dual top planters:
Planted with *Aglaonema* 'Silver Bay'
08-A3



Superline conica topper:
Planted with *Dracaena* 'Hawaiian Sunshine'
08-A4

Some of the most bright and easy-care indoor plants thrive in low-light conditions. Use them to add colour and life to your reception and offices. We'll help you choose exactly the right combination for your space, and make sure they're expertly looked after.



Silver leaf vase:
Planted with Dracaena 'Janet Craig'
09-A1

LOW LIGHT | FLOOR STANDING

INTERIOR PLANTING

CLICK THROUGH TO OUR
WEBSITE TO LEARN MORE.

Spiral bold (cracked black tab shell):
Planted with Areca lutescens
10-A1

WWW.NURTURELANDSCAPES.CO.UK | 0800 755 5265

Some of the most bright and easy-care indoor plants thrive in low-light conditions. Use them to add colour and life to your reception and offices. We'll help you choose exactly the right combination for your space, and make sure they're expertly looked after.



Lechuza diamante (red):
Planted with Dracaena Lemon Lime
11-A1



Lechuza cubico (silver):
Planted with Dracaena deremensis
11-A2



Round fiberglass planter:
Planted with Dracaena Janet Craig
11-A3



Lechuza cubico (red):
Planted with Dracaena Marginata
11-A4

LOW LIGHT | FLOOR STANDING

INTERIOR PLANTING



Lechuza cubico:
Planted with *Howea forsteriana*
12-A1



Barrier planter in white gloss:
Planted with *Dracaena Janet Craig*
12-A2



Parel planter:
Planted with *Howea forsteriana*
12-A3



Lechuza cararo trough:
Planted with *Dracaena deremensis*
12-A4

Some of the most bright and easy-care indoor plants thrive in low-light conditions. Use them to add colour and life to your reception and offices. We'll help you choose exactly the right combination for your space, and make sure they're expertly looked after.



LOW LIGHT | FLOOR STANDING

INTERIOR PLANTING



Cemani vase:
Planted with Liriope muscari
14 - A1

Some of the most bright and easy-care indoor plants thrive in low-light conditions. Use them to add colour and life to your reception and offices. We'll help you choose exactly the right combination for your space, and make sure they're expertly looked after.



Phoenix round planter:
Planted with *Dracaena marginata*
15-A1



Lechuza rondo (anthracite):
Planted with *Dracaena Lemon Lime*
15-A2



Desert vase:
Planted with *Ficus alii*
15-A3



Lechuza delta (anthracite):
Planted with *Howea forsteriana*
15-A4

LOW LIGHT | FLOOR STANDING

INTERIOR PLANTING



Cono Square planters:
Planted with *Philodendron scandens*
16-A1



Banana planter (bleached):
Planted with *Dracaena fragrans multistem*
16-A2



Lechuza delta (white gloss):
Planted with *Dracaena cintho multistem*
16-A3



Luna planter:
Planted with *Aspidistra elatior*
16-A4

Some of the most bright and easy-care indoor plants thrive in low-light conditions. Use them to add colour and life to your reception and offices. We'll help you choose exactly the right combination for your space, and make sure they're expertly looked after.



Pandora planter (gold leaf):
Planted with Aspidistra elatior
17-A1

LOW LIGHT | FLOOR STANDING

INTERIOR PLANTING



Largo planters:
Planted with *Dracaena* 'Janet Craig' multistem
18-A1

Some of the most bright and easy-care indoor plants thrive in low-light conditions. Use them to add colour and life to your reception and offices. We'll help you choose exactly the right combination for your space, and make sure they're expertly looked after.



President planter (brushed aluminium):
Planted with *Aglaonema* 'Green light'
19-A1



Primus Upside down planters:
Planted with *Scindapsus aureas*
19-A2

Sphere planters:
Planted with *Howea Forsteriana*
19-A3



Bursting planter:
Planted with *Sansevieria zeylanica*
20-A1

MEDIUM LIGHT | FLOOR STANDING:

INTERIOR PLANTING

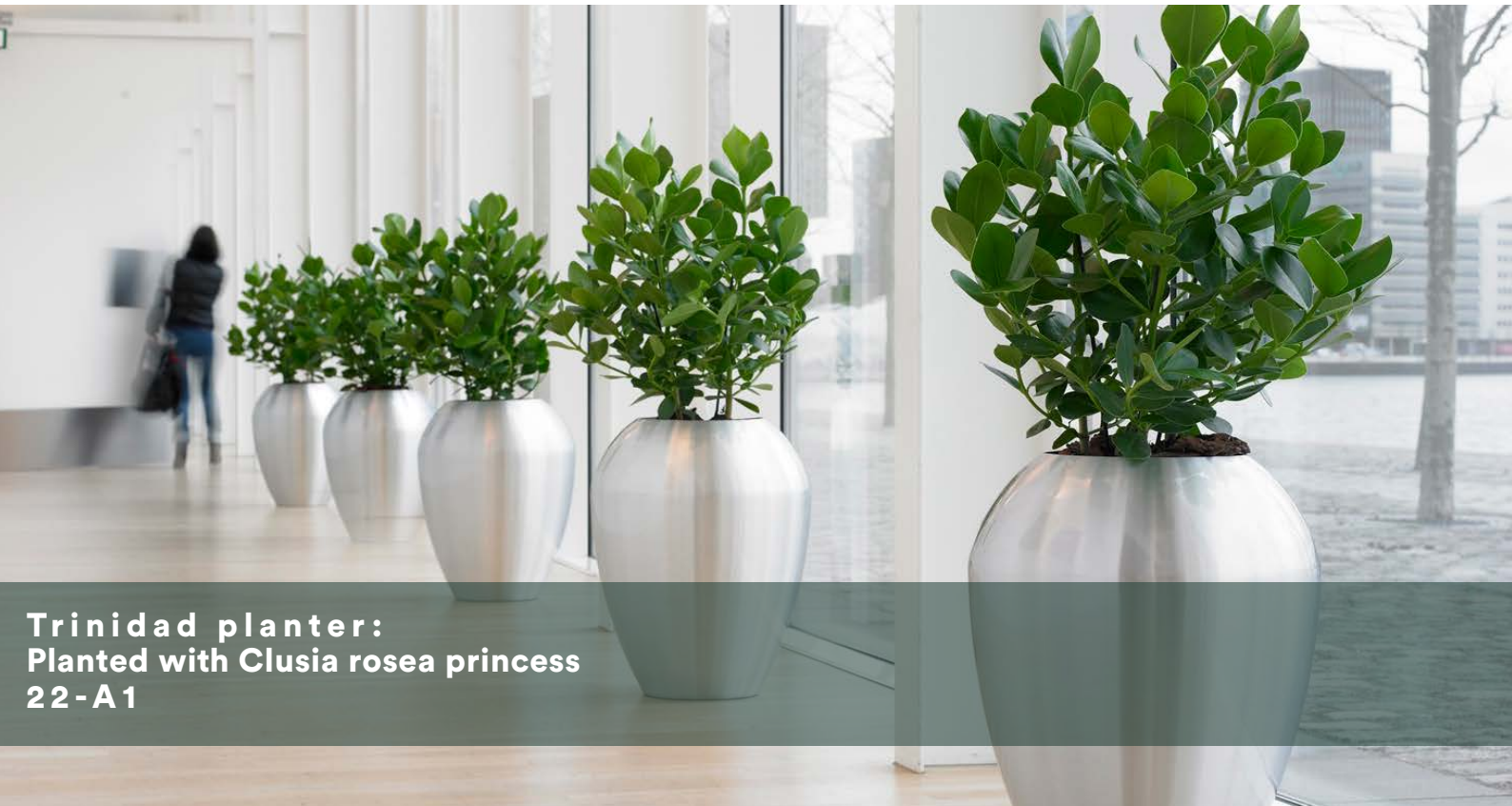
We are committed to the most environmentally responsible methods of planting and growing methods available, including the use of peat-free compost, worm cast and hydroponics.

Our interior plants are peat free to keep nature's natural peat flood defence doing what it should. The hydroponic growing medium that we use is 100% recyclable.

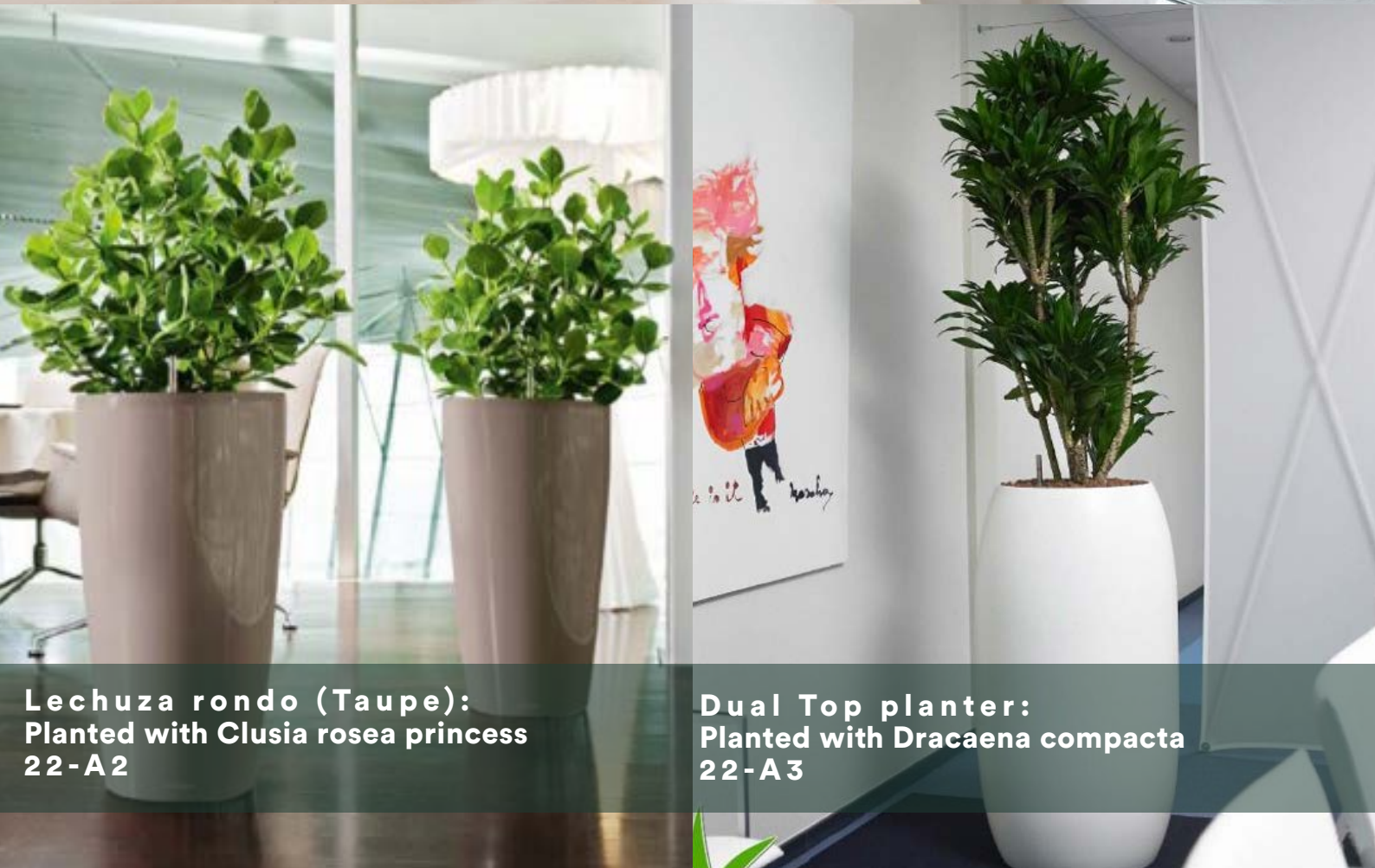
Enjoy looking through our plant selection for medium lighting.

MEDIUM LIGHT | FLOOR STANDING

INTERIOR PLANTING



Trinidad planter:
Planted with *Clusia rosea princess*
22-A1



Lechuza rondo (Taupe):
Planted with *Clusia rosea princess*
22-A2

Dual Top planter:
Planted with *Dracaena compacta*
22-A3

Our interior plants are peat free to keep nature's natural peat flood defence doing what it should. The hydroponic growing medium that we use is 100% recyclable. Nurture Landscapes have trained technicians that visit at regular intervals to ensure your planting is kept operating at optimum efficiency.



**CLICK HERE TO GO THE
NURTURE LANDSCAPE WEBSITE**

**Celebes planter (black tab slit shell):
Planted with Caryota mitis
23-A1**

MEDIUM LIGHT | FLOOR STANDING

INTERIOR PLANTING

CLICK HERE TO READ
ABOUT THE BENEFITS
OF OUR **PEAT-FREE &
HYDROPONIC PLANT
DISPLAYS**

UFO bowl:
Planted with *Beaucarnea nolina*
24-A1



Our interior plants are peat free to keep nature's natural peat flood defence doing what it should. The hydroponic growing medium that we use is 100% recyclable. Nurture Landscapes have trained technicians that visit at regular intervals to ensure your planting is kept operating at optimum efficiency.



Harmony Planter:
Planted with *Beaucarnea recurvata*
25 - A1



Banana Leaf Vase:
Planted with *Beaucarnea recurvata*
25 - A2



Rhine planter:
Planted with *Beaucarnea recurvata*
25 - A3

MEDIUM LIGHT | FLOOR STANDING

INTERIOR PLANTING



Lechuza delta planter:
Planted with Schefflera 'gold capella' tree form
26-A1



Paris plus upside down planter:
Planted with Caryota mitis
26-A2



Starline planter:
Planted with Pleomele reflexa
26-A3

Our interior plants are peat free to keep nature's natural peat flood defence doing what it should. The hydroponic growing medium that we use is 100% recyclable. Nurture Landscapes have trained technicians that visit at regular intervals to ensure your planting is kept operating at optimum efficiency.



**London plus planters:
Planted with Pleomele 'Song of India'
27-A1**

MEDIUM LIGHT | FLOOR STANDING

INTERIOR PLANTING



**Lechuza delta planter:
Planted with Schefflera 'amate'
28-A1**

Our interior plants are peat free to keep nature's natural peat flood defence doing what it should. The hydroponic growing medium that we use is 100% recyclable. Nurture Landscapes have trained technicians that visit at regular intervals to ensure your planting is kept operating at optimum efficiency.



Symmetry planter:
Planted with Schefflera 'louisiana'
29 - A1



Superline trend floor trough:
Planted with Dracaena surculosa
29 - A2

MEDIUM LIGHT | FLOOR STANDING

INTERIOR PLANTING



Ovation vase:
Planted with Sansevieria 'spikes'
30-A1



Superline Conica Topper vase:
Planted with Sansevieria Laurentii
30-A2



Fusion planter:
Planted with Sansevieria 'Coral Black'
30-A3



Polystone seaside planter (smoke):
Planted with Sansevieria 'kirkii'
30-A4

Our interior plants are peat free to keep nature's natural peat flood defence doing what it should. The hydroponic growing medium that we use is 100% recyclable. Nurture Landscapes have trained technicians that visit at regular intervals to ensure your planting is kept operating at optimum efficiency.

**Loft vase (Black diamond):
Planted with Sansevieria 'spikes'
31-A1**



MEDIUM LIGHT | FLOOR STANDING

INTERIOR PLANTING



**Luxury vase:
Planted with Cordyline congesta
32-A1**

Our interior plants are peat free to keep nature's natural peat flood defence doing what it should. The hydroponic growing medium that we use is 100% recyclable. Nurture Landscapes have trained technicians that visit at regular intervals to ensure your planting is kept operating at optimum efficiency.



Kubis planter:
Planted with *Sansevieria cylindrica*
33-A1



Curvy trough planter:
Planted with *Sansevieria Laurentii*
33-A2



Curvy planter:
Planted with *Echinocactus grusonii*
33-A3



Presix aluminium planter:
Planted with *Beaucarnea nolina*
33-A4

MEDIUM LIGHT | FLOOR STANDING

INTERIOR PLANTING



Fiberglass Barrier planter:
Planted with *Schefflera arboricola*
34-A1



Solo Floor Trough:
Planted with *Dracaena surculosa*
34-A2

Our interior plants are peat free to keep nature's natural peat flood defence doing what it should. The hydroponic growing medium that we use is 100% recyclable. Nurture Landscapes have trained technicians that visit at regular intervals to ensure your planting is kept operating at optimum efficiency.



**Floor Trough (aged lead finish):
Planted with *Dracaena surculosa*
35-A1**



Rhine Planter:
Planted with Crassula sunset
36 - A1

HIGH LIGHT | FLOOR STANDING:

INTERIOR PLANTING

Nurture Landscapes continually strive to raise awareness of the benefits of plants in the workplace. Research has found that plants can benefit businesses and their workforce in a variety of ways; including better staff health, increased productivity and financial savings. Just one plant is all you need to make a difference.

Look through our interior planting displays and ranges for your well lit, bright rooms here.

HIGH LIGHT | FLOOR STANDING

INTERIOR PLANTING



Cosmo planter:
Planted with *Sansevieria cylindrica*
38-A1



Tall square planter:
Planted with *Ficus ginseng*
38-A2



Black polished Geo planter:
Planted with *Yucca elephantipes*
38-A3

Nurture Landscapes continually strive to raise awareness of the benefits of plants in the workplace. Research has found that plants can benefit businesses and their workforce in a variety of ways; including better staff health, increased productivity and financial savings. Just one plant is all you need to make a difference.



Cosmo planter:
Planted with Yucca elephantipes
39-A1

HIGH LIGHT | FLOOR STANDING

INTERIOR PLANTING



Curvy planter:
Planted with Ficus benjamina (braided stem)
40-A1

Nurture Landscapes continually strive to raise awareness of the benefits of plants in the workplace. Research has found that plants can benefit businesses and their workforce in a variety of ways; including better staff health, increased productivity and financial savings. Just one plant is all you need to make a difference.



Lechuza cubico planter:
Planted with *Ficus ginseng*
41-A1



Curvy planter:
Planted with *Ficus ginseng*
41-A2



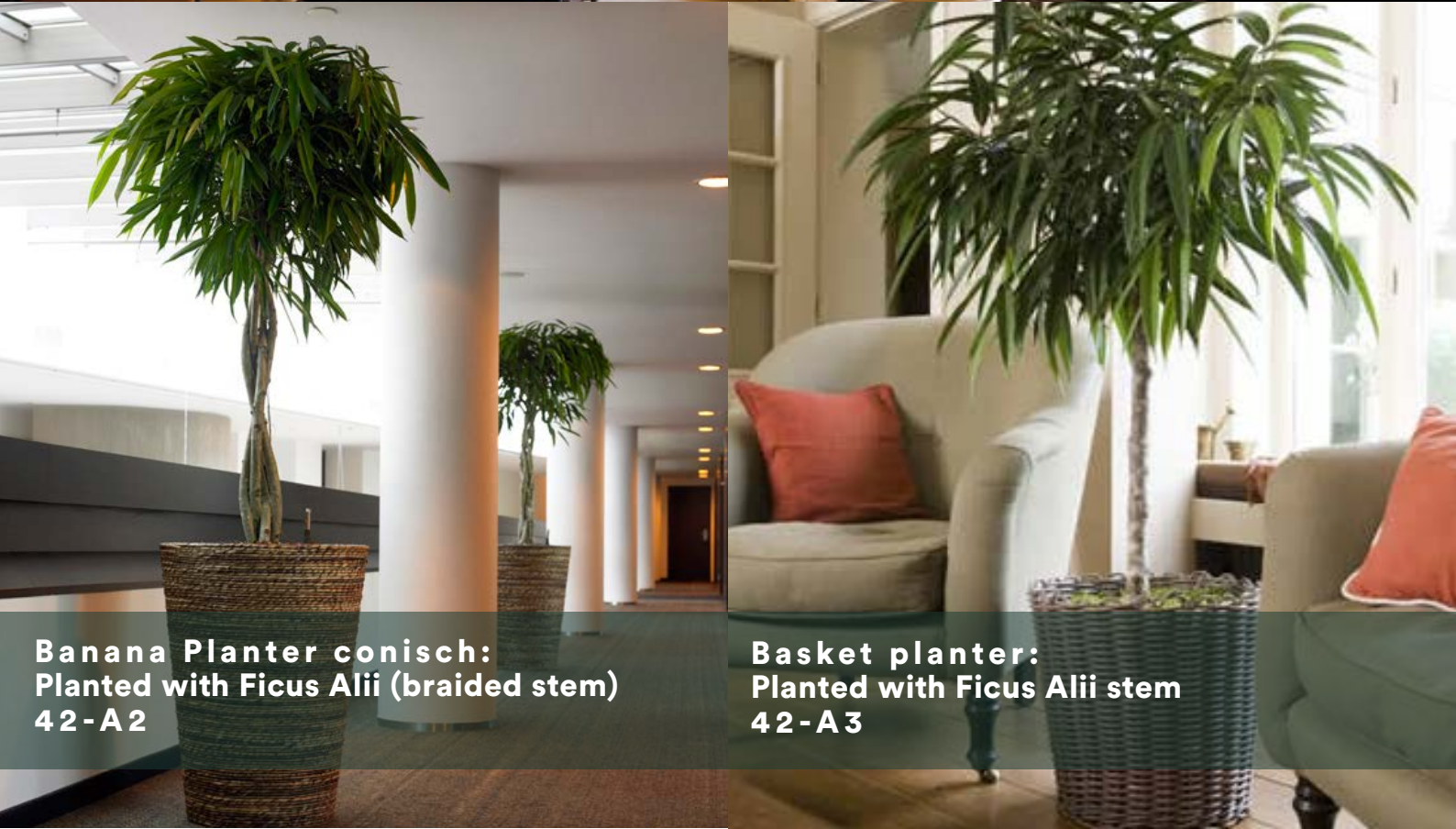
S-planter:
Planted with *Ficus microcarpa compacta*
41-A3

HIGH LIGHT | FLOOR STANDING

INTERIOR PLANTING



Polystone Seaside planter (natural):
Planted with Ficus Panda
42-A1



Banana Planter conisch:
Planted with Ficus Alii (braided stem)
42-A2

Basket planter:
Planted with Ficus Alii stem
42-A3

Nurture Landscapes continually strive to raise awareness of the benefits of plants in the workplace. Research has found that plants can benefit businesses and their workforce in a variety of ways; including better staff health, increased productivity and financial savings. Just one plant is all you need to make a difference.



**Magellan Abaca planter:
Planted with Buddha bamboo (Art)
43-A1**

HIGH LIGHT | FLOOR STANDING

INTERIOR PLANTING



Magellan wicker planter:
Planted with *Beaucarnea recurvata*
44-A1

Nurture Landscapes continually strive to raise awareness of the benefits of plants in the workplace. Research has found that plants can benefit businesses and their workforce in a variety of ways; including better staff health, increased productivity and financial savings. Just one plant is all you need to make a difference.



Artevasi piza planter:
Planted with *Schefflera arboricola*
45 - A1



Lechuza rondo planter:
Planted with *Ficus benjamina* double spiral
45 - A2



Luna planter:
Planted with *Ficus benjamina* (Art)
45 - A3

HIGH LIGHT | FLOOR STANDING

INTERIOR PLANTING



Kubis planter:
Planted with Croton Petra
46-A1



Banana planter square:
Planted with Ficus Lyrata
46-A2



Jura square:
Planted with Ficus lyrata bambino
46-A3



Tower planter:
Planted with Croton petra
46-A4

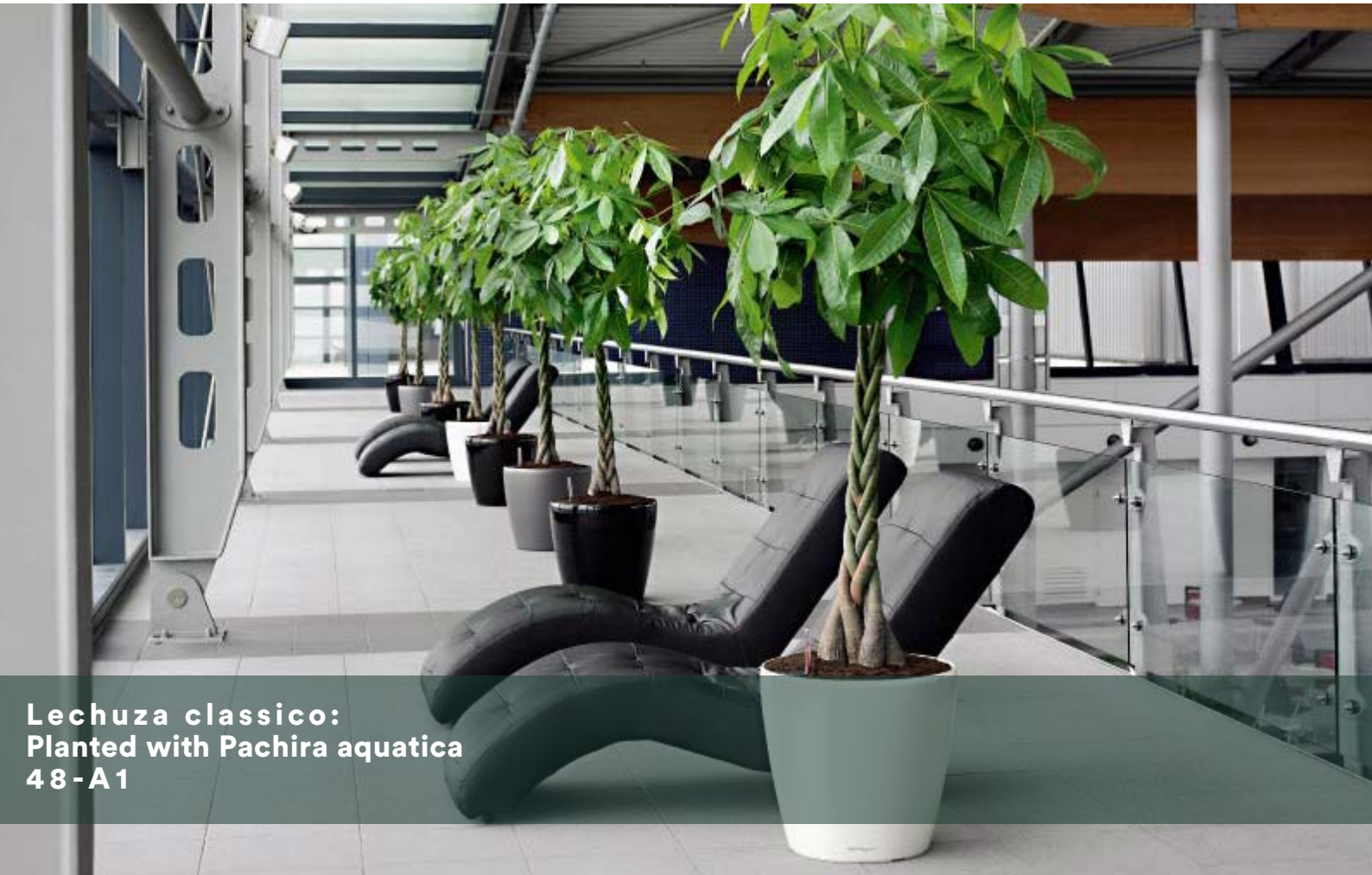
Nurture Landscapes continually strive to raise awareness of the benefits of plants in the workplace. Research has found that plants can benefit businesses and their workforce in a variety of ways; including better staff health, increased productivity and financial savings. Just one plant is all you need to make a difference.



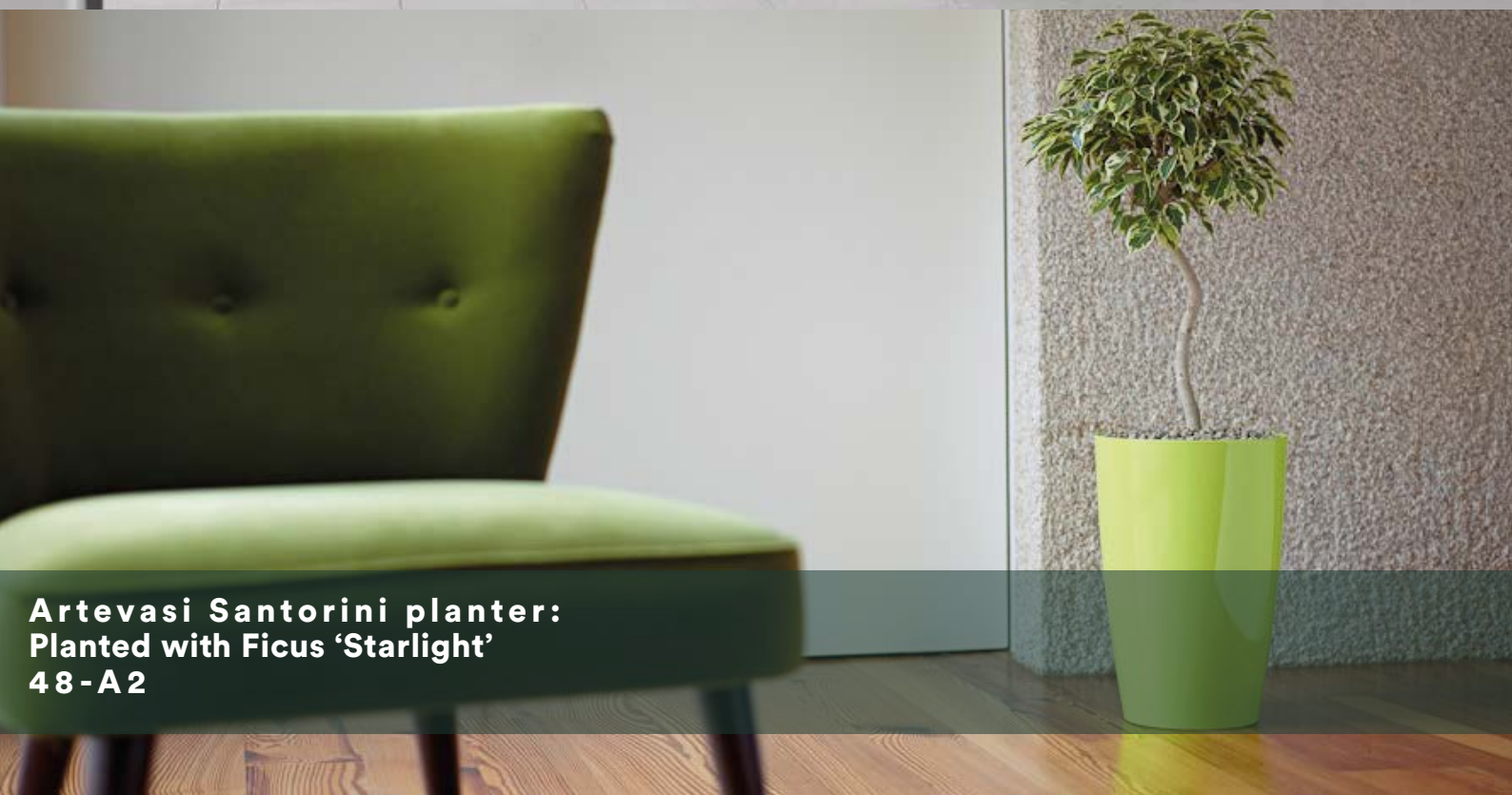
Tulip plus planter:
Planted with Croton petra
47-A1

HIGH LIGHT | FLOOR STANDING

INTERIOR PLANTING



Lechuza classico:
Planted with *Pachira aquatica*
48-A1



Artevasi Santorini planter:
Planted with *Ficus 'Starlight'*
48-A2

Nurture Landscapes continually strive to raise awareness of the benefits of plants in the workplace. Research has found that plants can benefit businesses and their workforce in a variety of ways; including better staff health, increased productivity and financial savings. Just one plant is all you need to make a difference.



Lechuza classic planter:
Planted with Ficus 'Amstel King'
49 - A1



Polar vase:
Planted with Areca lutescens
49 - A2



Atevasi San Remo planter:
Planted with Ficus Longifolia 'braided stem'
49 - A3

HIGH LIGHT | FLOOR STANDING

INTERIOR PLANTING



**Rocky vase planter:
Planted with Ficus Lyrata
50-A1**

Nurture Landscapes continually strive to raise awareness of the benefits of plants in the workplace. Research has found that plants can benefit businesses and their workforce in a variety of ways; including better staff health, increased productivity and financial savings. Just one plant is all you need to make a difference.



Polystone Couple planter:
Planted with *Euphorbia tirucalli*
51-A1



Tall vase planter:
Planted with *Schefflera Louisiana*
51-A2



Bullet planter:
Planted with *Ficus ginseng*
51-A3



**Pandora planter (gold leaf):
Planted with Phalaenopsis orchid
52-A1**

LIVE FLOWERING DISPLAYS:

INTERIOR PLANTING

Flora in general makes us feel happier and more content with life and work generally. There is plenty of research concerned with Biophilia – Man's relationship with plants highlighting the need to interact with nature. The psychological benefits of this relationship are now becoming apparent and could be more important than the physiological ones. Essentially it boils down to the fact that people like plants.

Bring some colour and vibrancy to your reception area and office space with our beautiful selection of live flowering displays.

LIVE FLOWERING DISPLAYS

INTERIOR PLANTING



Deltini planter:
Planted with Vriesea
54 - A1



River bowl:
Planted with Vriesea (Bolivian range)
54 - A2



Seine and Mississippi planters:
Planted with Vriesea
54 - A3



Flora in general makes us feel happier and more content with life and work generally. There is plenty of research concerned with Biophilia (man's relationship with plants highlighting the need to interact with nature). Bring some colour and vibrancy to your reception area and office space with our beautiful selection of live flowering displays.



**Mashua oval planter:
Planted with Vriesea
55-A1**

LIVE FLOWERING DISPLAYS

INTERIOR PLANTING



Glamour bowl:
Planted with Guzmania (red)
56-A1



Cararo trough:
Planted with Guzmania (yellow)
56-A2



Quadik planter:
Planted with Guzmania (red)
56-A3

Flora in general makes us feel happier and more content with life and work generally. There is plenty of research concerned with Biophilia (man's relationship with plants highlighting the need to interact with nature). Bring some colour and vibrancy to your reception area and office space with our beautiful selection of live flowering displays.



**Map bowl (mother of pearl):
Planted with Guzmania (purple)
57-A1**

LIVE FLOWERING DISPLAYS

INTERIOR PLANTING



Tower & Barrier planters:
Planted with *Sansevieria kirkii* and *Guzmania* (red, white, blue)
58-A1



Jura round planter:
Planted with *Guzmania* (white)
58-A2

Flora in general makes us feel happier and more content with life and work generally. There is plenty of research concerned with Biophilia (man's relationship with plants highlighting the need to interact with nature). Bring some colour and vibrancy to your reception area and office space with our beautiful selection of live flowering displays.



Sophia Planter:
Planted with Guzmania torch
59 - A1



Jadeco plus planter:
Planted with Guzmania (yellow)
59 - A2



Rome bowls:
Planted with Guzmania torch
59 - A3

LIVE FLOWERING DISPLAYS

INTERIOR PLANTING



Cigar planters:
Planted with Spathyphillum
60-A1

Flora in general makes us feel happier and more content with life and work generally. There is plenty of research concerned with Biophilia (man's relationship with plants highlighting the need to interact with nature). Bring some colour and vibrancy to your reception area and office space with our beautiful selection of live flowering displays.



Lechuza oval delta planter:
Planted with Spathyphillum
61-A1



Lechuza cubico:
Planted with Spathyphillum sensation
61-A2



Barca bowl:
Planted with Spathyphillum
61-A3

LIVE FLOWERING DISPLAYS

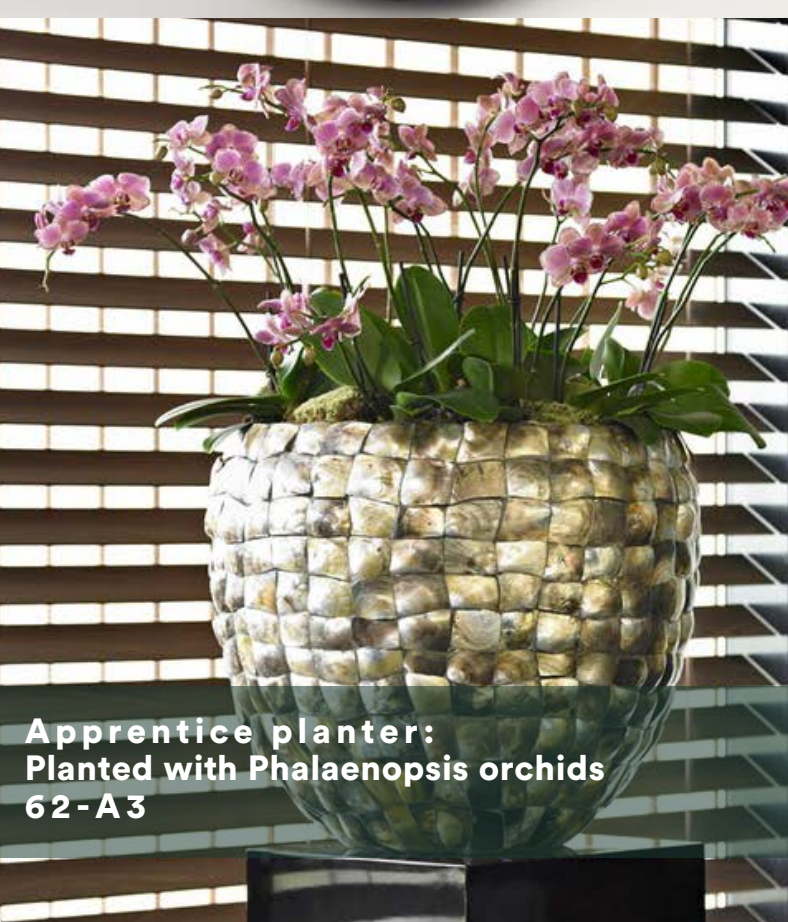
INTERIOR PLANTING



Black peter bowl:
Planted with single Phalaenopsis orchid
62 - A1 (Equadorian range)



White peter bowl:
Planted with single Phalaenopsis orchids
62 - A2



Apprentice planter:
Planted with Phalaenopsis orchids
62 - A3



Flora in general makes us feel happier and more content with life and work generally. There is plenty of research concerned with Biophilia (man's relationship with plants highlighting the need to interact with nature). Bring some colour and vibrancy to your reception area and office space with our beautiful selection of live flowering displays.



UFO bowl:
Planted with Phalaenopsis orchids
63-A1

LIVE FLOWERING DISPLAYS

INTERIOR PLANTING



**Geo marble vase:
Planted with Phalaenopsis orchids
64-A1**

Flora in general makes us feel happier and more content with life and work generally. There is plenty of research concerned with Biophilia (man's relationship with plants highlighting the need to interact with nature). Bring some colour and vibrancy to your reception area and office space with our beautiful selection of live flowering displays.



Dorant bowl:
Planted with Phalaenopsis orchids
65-A1 (Equadorian range)



Lechuza cubico:
Planted with Phalaenopsis orchids
65-A3



Cornische vase:
Planted with Vanda Orchids
65-A2 (Colombian range)

LIVE FLOWERING DISPLAYS

INTERIOR PLANTING



Rondo planter:
Planted with Phalaenopsis orchids (white)
66-A1

Flora in general makes us feel happier and more content with life and work generally. There is plenty of research concerned with Biophilia (man's relationship with plants highlighting the need to interact with nature). Bring some colour and vibrancy to your reception area and office space with our beautiful selection of live flowering displays.



Curvy bowl:
Planted with Phalaenopsis orchids
67-A1



Beth bowl:
Planted with Phalaenopsis orchids
67-A2 (Equadorian range)



Artevasi Floreiria Porto planter:
Planted with Phalaenopsis orchids
67-A3

LIVE FLOWERING DISPLAYS

INTERIOR PLANTING



Woody bowl:
Planted with Phalaenopsis orchids
68 - A1 (Colombian range)



Black Dorant bowl:
Planted with single orchid
68 - A2 (Equadorian range)



Goldleaf bowl:
Planted with Phalaenopsis orchids
68 - A3 (Bolivian range)

Flora in general makes us feel happier and more content with life and work generally. There is plenty of research concerned with Biophilia (man's relationship with plants highlighting the need to interact with nature). Bring some colour and vibrancy to your reception area and office space with our beautiful selection of live flowering displays.



Silverleaf bowl:
Planted with Phalaenopsis orchids
69 - A1 (Bolivian range)



Beth bowl:
Planted with single orchid
69 - A2 (Equadorian range)



Beth bowl:
Planted with single orchid
69 - A3 (Equadorian range)

LIVE FLOWERING DISPLAYS

INTERIOR PLANTING



Peter bowl:
Planted with Vriesea (red)
70 - A1



River bowl:
Planted with Aechmea 'Blue Rain'
70 - A2 (Bolivian range)



Canoe bowl (cracked black tab shell):
Planted with Orchid
70 - A3

Flora in general makes us feel happier and more content with life and work generally. There is plenty of research concerned with Biophilia (man's relationship with plants highlighting the need to interact with nature). Bring some colour and vibrancy to your reception area and office space with our beautiful selection of live flowering displays.



**Loft planter (Black diamond):
Planted with Red Flowering Anthurium
71-A1**



**Mosaic Bowl:
Planted with Spathyphillum
72-A1**

DESKTOP DISPLAYS:

INTERIOR PLANTING

Plants absorb, diffract and reflect sound waves so that noise is reduced, producing a calmer and more productive working environment and making them ideal for screening off specific areas. The reduction of noise by plants is most noticeable in spaces with hard surfaces.

We look after around 15,000 displays and carry out more than 20,000 maintenance visits every year.

Have a look through our selection of desktop displays [here](#).

DESKTOP DISPLAYS

INTERIOR PLANTING



Floreira Porta planter:
Planted with *Chamaedorea elegans*
74-A1



Lechuza quadro bowls:
Planted with *Ficus elastica* and *Sansevieria Laurentii*
74-A2

Plants absorb, diffract and reflect sound waves so that noise is reduced, producing a calmer and more productive working environment and making them ideal for screening off specific areas. The reduction of noise by plants is most noticeable in spaces with hard surfaces.



Lechuza cubico:
Planted with Ficus Ginseng
75-A1

DESKTOP DISPLAYS

INTERIOR PLANTING



Lechuza quadro bowl:
Planted with *Dracaena lemon lime tips*
76-A1



Brushed Aluminium cabinet troughs:
Planted with *Sansevieria 'Coral Black'*
76-A2

Plants absorb, diffract and reflect sound waves so that noise is reduced, producing a calmer and more productive working environment and making them ideal for screening off specific areas. The reduction of noise by plants is most noticeable in spaces with hard surfaces.



**Brushed Aluminium cabinet troughs:
Planted with Sansevieria 'Coral Black'
77-A1**



**Brushed Aluminium Parel Bowl:
Planted with Echinocactus grusonii
77-A2**

DESKTOP DISPLAYS

INTERIOR PLANTING



Brushed Aluminium Parel Bowl:
Planted with Spathyphillum
78-A1



Linik troughs:
Planted with Aglaonema (mixed)
78-A2

Plants absorb, diffract and reflect sound waves so that noise is reduced, producing a calmer and more productive working environment and making them ideal for screening off specific areas. The reduction of noise by plants is most noticeable in spaces with hard surfaces.



Sunny Bowl:
Planted with *Aglaonema 'cutlass'*
79 - A1



Brushed Aluminium Parel Bowl:
Planted with *Spathyphillum*
79 - A2

DESKTOP DISPLAYS

INTERIOR PLANTING



Cirkik pot:
Planted with *Crassula 'horntree'*
80-A1



Linik trough:
Planted with *Dracaena Surculosa*
80-A2

Plants absorb, diffract and reflect sound waves so that noise is reduced, producing a calmer and more productive working environment and making them ideal for screening off specific areas. The reduction of noise by plants is most noticeable in spaces with hard surfaces.



San Remo pot:
Planted with *Beaucarnea nolina*
81-A1



Glamour Bowl:
Planted with *Chlorophytum 'Ocean'*
81-A2



**In-built cabinet planters:
Planted with Aglaonema 'Christina'
82-A1**

CABINET PLANTERS:

INTERIOR PLANTING

Plants can create walkways or indicators of traffic flow in an office, helping to guide your visitors, customers and staff around otherwise large and undefined areas. They can be used to define break-out areas, meeting spaces and provide sound barriers between workspaces or as markers between departments.

Enjoy looking through our range of built-in cabinet planters [here](#).

CABINET PLANTERS

INTERIOR PLANTING



In-built cabinet planters:
Planted with *Aglaonema* 'Christina'
84 - A1



In-built cabinet planters:
Planted with *Sansevieria* 'Coral Black'
84 - A2

Plants can create walkways or indicators of traffic flow in an office, helping to guide your visitors, customers and staff around otherwise large and undefined areas. They can be used to define break-out areas, meeting spaces and provide sound barriers between workspaces or as markers between departments.



In-built cabinet planters:
Planted with *Aglaonema* 'Christina' and *Dracaena surculosa*
85-A1



In-built cabinet planters:
Planted with *Dracaena* 'compacta' and *Pleomele* 'Song of India'
85-A2

CABINET PLANTERS

INTERIOR PLANTING



**In-built cabinet planters:
Planted with *Dracaena 'compacta'*
86-A1**



**In-built cabinet planters:
Planted with *Sansevieria laurentii*
86-A2**

Plants can create walkways or indicators of traffic flow in an office, helping to guide your visitors, customers and staff around otherwise large and undefined areas. They can be used to define break-out areas, meeting spaces and provide sound barriers between workspaces or as markers between departments.



In-built cabinet planters:
Planted with *Sansevieria Laurentii*
87-A1



In-built cabinet planters:
Planted with *Sansevieria Zeylanica*
87-A2



**Cactus Cubes:
Small / Medium / Large
88-A1**

Cactus plants are known for their hardy nature and require little watering, but they will need to be near sunlight, yet not in direct sunlight.



**CLICK HERE TO GO
TO OUR WEBSITE**

CACTUS CUBES:

INTERIOR PLANTING

Having plants indoors creates a more relaxed and comfortable working environment. Research has shown that employees working in a space which looks and feels good, feel more appreciated.

The office cactus plant can be a great plant for individual desks keeping a small robust plant around your personal desk space is a good start to enriching your office space and purifying the air.

WHAT WE DO:

INTERIOR GREEN WALLS:



WORMERIES:



GREEN WALL MAINTENANCE:



FRESH FLOWERS:



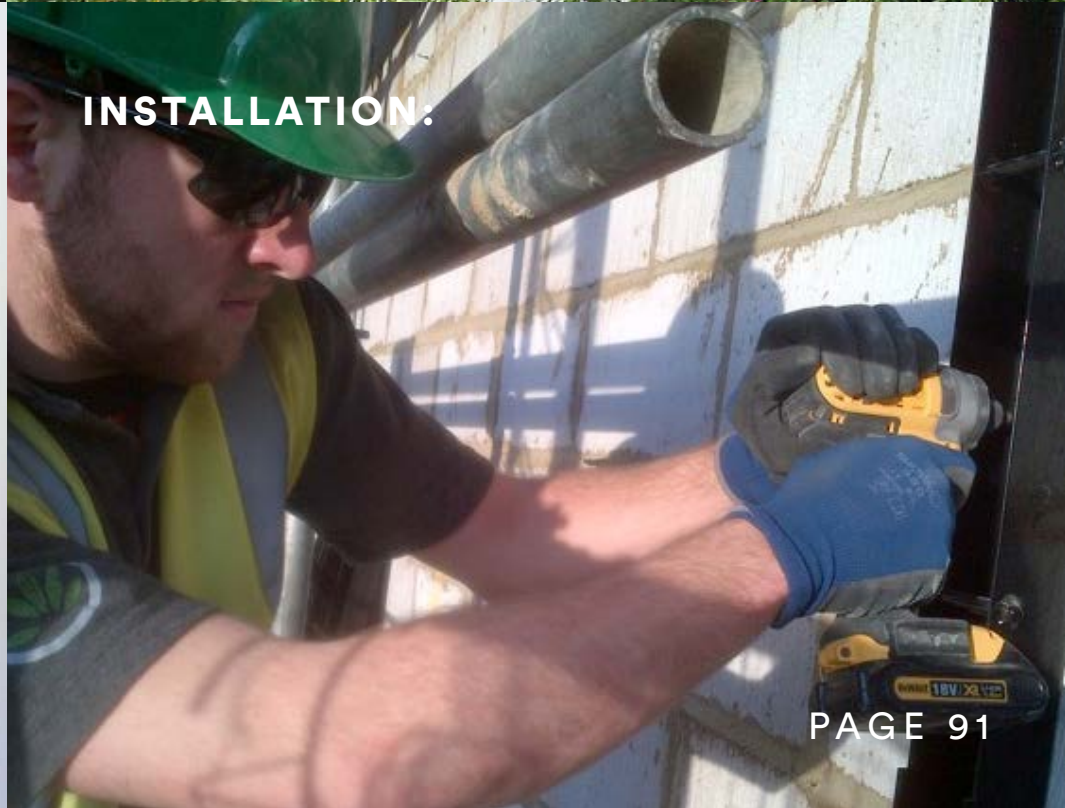
SERVICES



GROUND MAINTENANCE:



INSTALLATION:



WHAT WE DO:

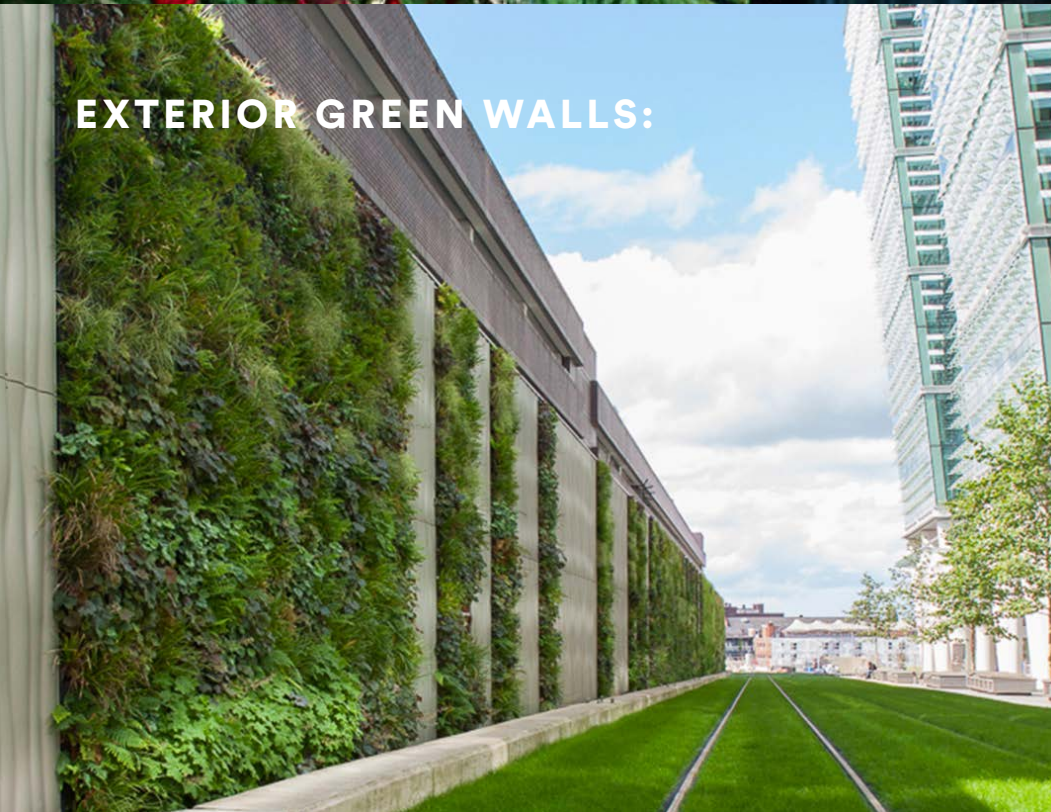
CHRISTMAS TREES:



WINTER GRITTING:



EXTERIOR GREEN WALLS:



CHRISTMAS DECORATIONS:



SERVICES

INTERIOR PLANTING:



ATIONS:



EXTERIOR PLANTING:

