



The Nurture Group

EXTERIOR PLANT DISPLAYS

WWW.NURTURELANDSCAPES.CO.UK



NURTURE LANDSCAPES:

WWW.NURTURELANDSCAPES.CO.UK

Nurture is an award winning national horticulture and landscape maintenance business, enhancing asset value and enriching the environment. Equally committed to its people and its clients as well as working sustainably.

Nurture has pioneered environmental initiatives to reduce carbon and improve energy efficiency. We work in collaboration with clients across the public and private sectors, maintaining assets to the highest standards of safety and quality.





CONTENTS:

CLICK ON THE PAGES BELOW

- 02 NURTURE LANDSCAPES**
- 04 EXTERIOR PLANTING DISPLAYS**
- 12 EXTERIOR HANGING BASKETS**
- 14 EXTERIOR WINDOW BOXES**
- 18 EXTERIOR ROOF TERRACES**
- 28 EXTERIOR ARTIFICIAL LAWNS**
- 32 OUR SERVICES**



Square Tower planters (Red Gloss):
Planted with Festuca glauca
04-A1

PLANTING DISPLAYS:

EXTERIOR SERVICES

Nurture Landscapes offer the widest range of ways of incorporating planting into any space from traditional plants in planters, insitu planting, green walls and a wide range of more innovative solutions for improving the exterior environment and what's more we can supply them anywhere in the UK.

We'll help you choose exactly the right combination for your space, and make sure they're expertly looked after. Our trained technicians visit at regular intervals to ensure your planting is kept operating at optimum efficiency.

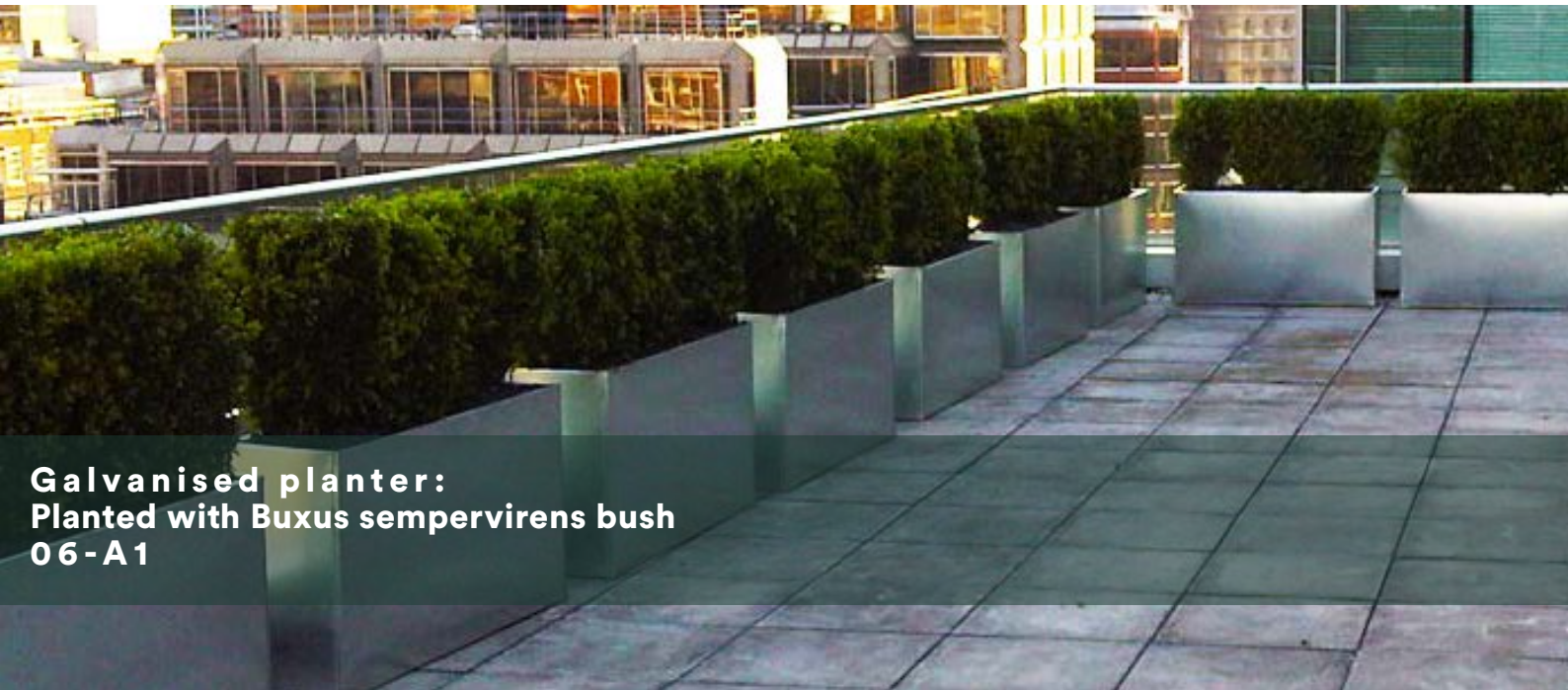
We supply projects of any size, and we apply the same high standards of professionalism whether the job is big or small.

Our modern and contemporary designs make our outdoor planters an ideal addition to any space. Whether you are looking for a balcony planter, modern plant pots, trough planters, decorative planters or stylish natural stone planters, we have an excellent selection to choose from in a range of materials and finishes.

Have a look through some of our exterior planter options here.

PLANTING DISPLAYS

EXTERIOR SERVICES



Galvanised planter:
Planted with *Buxus sempervirens* bush
06-A1



Flared square graphite planter:
Planted with *Buxus sempervirens* bush
06-A2

Our modern and contemporary designs make our outdoor planters an ideal addition to any space. Whether you are looking for a balcony planter, modern plant pots, trough planters, decorative planters or stylish natural stone planters, we have an excellent selection to choose from in a range of materials and finishes.



**Lechuza Cubico: planter:
Planted with Buxus sempervirens ball topiary
07-A1**

PLANTING DISPLAYS

EXTERIOR SERVICES



Gun metal Polystone planter:
Planted with Buxus sempervirens topiary cubes
08-A1



Olive globe planter:
Planted with Buxus sempervirens
ball topiary
08-A2



Gun Metal Polystone cube planter:
Planted with Taxus baccata pyramid topiary
08-A3

Our modern and contemporary designs make our outdoor planters an ideal addition to any space. Whether you are looking for a balcony planter, modern plant pots, trough planters, decorative planters or stylish natural stone planters, we have an excellent selection to choose from in a range of materials and finishes.



White GRP tower planter:
Planted with *Buxus sempervirens*
cubed topiary
09 - A1



White GRP Trough planter:
Planted with *Phyllostachys aurea*
09 - A2



White GRP trough planter:
Planted with *Taxus baccata*
09 - A3

PLANTING DISPLAYS

EXTERIOR SERVICES



White GRP square planter:
Planted with *Phyllostachys aurea*
10-A1



Graphite flared cylinder ceramic planter: Planted with *Festuca glauca*
10-A2



White GRP square planter: Planted with *Acer Palmatum*
10-A3

Our modern and contemporary designs make our outdoor planters an ideal addition to any space. Whether you are looking for a balcony planter, modern plant pots, trough planters, decorative planters or stylish natural stone planters, we have an excellent selection to choose from in a range of materials and finishes.



**Gun metal Polystone planter:
Planted with Equisetaceae / Horse Tail Reed Bamboo
11-A1**



CONTACT OUR TEAM HERE

WWW.NURTURELANDSCAPES.CO.UK | 0800 755 5265

HANGING BASKETS:

EXTERIOR SERVICES

Brighten up your site with our hanging baskets. These can be designed to suit your needs and changed with the seasons.

We provide regular maintenance to ensure that your planting displays keep the 'wow factor', creating seasonal displays throughout the year.

Our tailor-made, planting designs create an impact for any entrance. We can theme your displays to promote your brand with matching colours and style appropriate to your needs.



CONTACT OUR TEAM HERE

WWW.NURTURELANDSCAPES.CO.UK | 0800 755 5265

WINDOW BOXES:

EXTERIOR SERVICES

Nurture Landscapes offer a complete service, all of our plants and products are maintained throughout the year.

From entrances of buildings and offices, gardens, hotel grounds and reception entrances to shopping centres. It is important to make your business premises welcoming and having attractive outdoor plant displays can make the difference between visitors and customers walking in or walking by.

We'll help you choose exactly the right combination of plants and window boxes for your site, and make sure they're expertly looked after.

If you'd like more information for a specific project then contact us today.

WINDOW BOXES - IET

EXTERIOR SERVICES

CLICK HERE TO READ
AND SEE MORE OF OUR
WORK WITH IET.



In May 2015 we were asked to take on the landscaping of Institution of Engineering and Technology. The bright flower displays, window boxes and lush green hedges create an impressive first impression for visitors, clients and staff. Our expert exterior team ensure that the Faraday pocket garden and terrace are flourishing at all times of year and looking spectacular.



A rooftop garden featuring wooden planters and benches. The planters are filled with various plants, including tall grasses, red flowers, and purple flowers. A large green bush is visible in the background. The garden is situated on a rooftop with a city skyline in the distance under a blue sky with clouds.

CONTACT OUR TEAM HERE

WWW.NURTURELANDSCAPES.CO.UK | 0800 755 5265

ROOF TERRACES:

EXTERIOR SERVICES

Living roofs and walls – green roofs, roof terraces and roof gardens all provide additional living space and bring the dual benefit of limiting the impact of climate change by keeping the city cooler, while at the same time reducing energy use and carbon dioxide emissions. Living roofs also enhance biodiversity, reduce flood risk (by absorbing heavy rainfall), provide insulation and improve the appearance of our city.

New construction techniques allow for a multitude of different types of ‘Living Roof’, from natural meadows, brownfield habitat and allotments, to formal gardens arranged with planters and seating space and even rooftop farms.

To help deliver more living roofs and combat climate change, the most recent alterations to the London Plan now “expect major developments to incorporate living roofs and walls where feasible.”

[London.gov.uk](https://www.london.gov.uk)

PSP

ROOF TERRACES



Modular wooden seat planters are incorporated to maximise the terrace space. Modern lighting spikes and downlighters as well as outdoor standard lamps were installed with lush replica turf to create a very modern, vibrant feel. The terrace is also bordered by a living green roof to encourage biodiversity.



CARNABY STREET

ROOF TERRACES



This green wall provides a calm and relaxing getaway from the hustle and bustle of London's busy west end. We have provided bird and bug boxes to attract local wildlife and to encourage biodiversity in the area. The contrast of lush greenery against the harsh city backdrop is not only aesthetically pleasing it also creates a multifunctional space for the building.



IET

ROOF TERRACES




We were asked to take on the landscaping of Institution of Engineering and Technology, this unique London venue on the River Thames had undergone a £30 million refurbishment, it now offers, improved capacity and new outside space.

In May 2015 as the refurbishment was drawing to a close we began reinstatement works and maintaining the planting.

The site comprises of the landmark Faraday pocket garden and a large landscaped terrace area which has spectacular views across the River Thames and in 2016 we were proud to be awarded with a prestigious Northbank in Bloom award. The site is a favourite of our maintenance team and we are very proud of the work we have done here.



ROOF TERRACES



The project involved working directly with the Architects and client to create a tailored plant design that would create shape and form on the roof terrace adding depth and texture to reinvigorate the exterior space with carefully positioned freestanding plants.

Incorporating touches of silver and white mixed arrangements alongside formal structures, meant the planting became a key feature, brightening and enhancing the surrounding space. In addition to energizing an underused area, this design drew on the large amount of research showing productivity gains where organisations incorporate plants within working spaces.

We worked with the Architects to incorporate walkways and defined seating areas within the design to produce an integrated design solution using plants to define spaces rather than just decorate them and in the process to give opportunities for office workers to come into closer contact with nature and provide a flexible space for use by staff and for larger corporate functions.

We were also proud of the work completed by our installation team which required flexible working out of hours to fit in with the clients' priorities and events and protecting finished floor coverings along the access route, whilst 5 tonnes of soil were removed and replaced with 65 powder coated containers and over 600 plants.

Working in partnership with Artillery Architecture, we created a vibrant roof terrace planting scheme that integrated fresh modern planting into an existing roof terrace space.

“The excellent interpretation of the original design concept works really well on the terrace. The space is well used by our staff for lunches and meetings in small groups on a daily basis. The partnership between the architects and planting company worked hard to take on board and deliver the finished look we wanted, even though some last minute changes were made which led to some very fast turn around times. Your maintenance guys understand how to care for the plants which look superb.”

Iain Blake | Facilities Supervisor Knight Frank LLP





CONTACT OUR TEAM HERE

WWW.NURTURELANDSCAPES.CO.UK | 0800 755 5265

ARTIFICIAL LAWNS:

EXTERIOR SERVICES

With outdoor and indoor events becoming more popular than ever, organisers and professionals are using artificial grass to transform these open hard and boring landscapes into engaging soft green grassy surfaces.

Artificial lawns are so easy to maintain and create the look and feel of lush natural grass yet without the mess, mud and maintenance. Perfect for a pop up event!

Get in touch with one of our team for a quote today.

ARTIFICIAL LAWNS

EXTERIOR SERVICES



**CONTACT
US HERE**

WWW.NURTURELANDSCAPES.CO.UK | 0800 755 5265

Our pop-up lawn at the Dial in Covent Garden was a huge success allowing visitors to the Fashion Feast event to relax and soak up the sun whilst enjoying complimentary cocktails. We also provided and installed a pop up lawn for Carnaby Street Eat, London's latest international food festival. Crowds flocked to where resident DJs provided summer chilled tunes and visitors relaxed on the lush green grass lawn.



Pop up Perfection ...

Pop Up events have become popular over the last few years. Traditionally they utilise empty shops or other buildings or spaces, for art exhibitions, restaurants or performances. They can last for a few hours, a few weeks and in some cases have become permanent fixtures due to their popularity.

WHAT WE DO:

INTERIOR GREEN WALLS:



WORMERIES:



GREEN WALL MAINTENANCE:



FRESH FLOWERS:



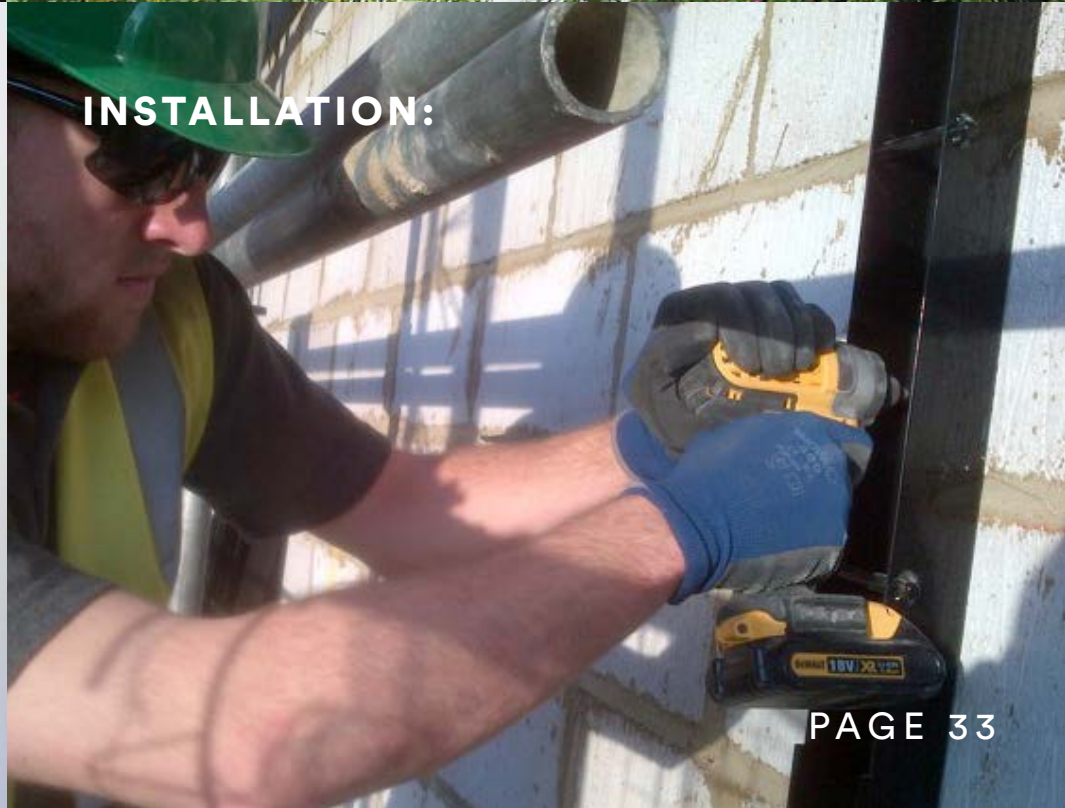
SERVICES



GROUND MAINTENANCE:



INSTALLATION:



WHAT WE DO:

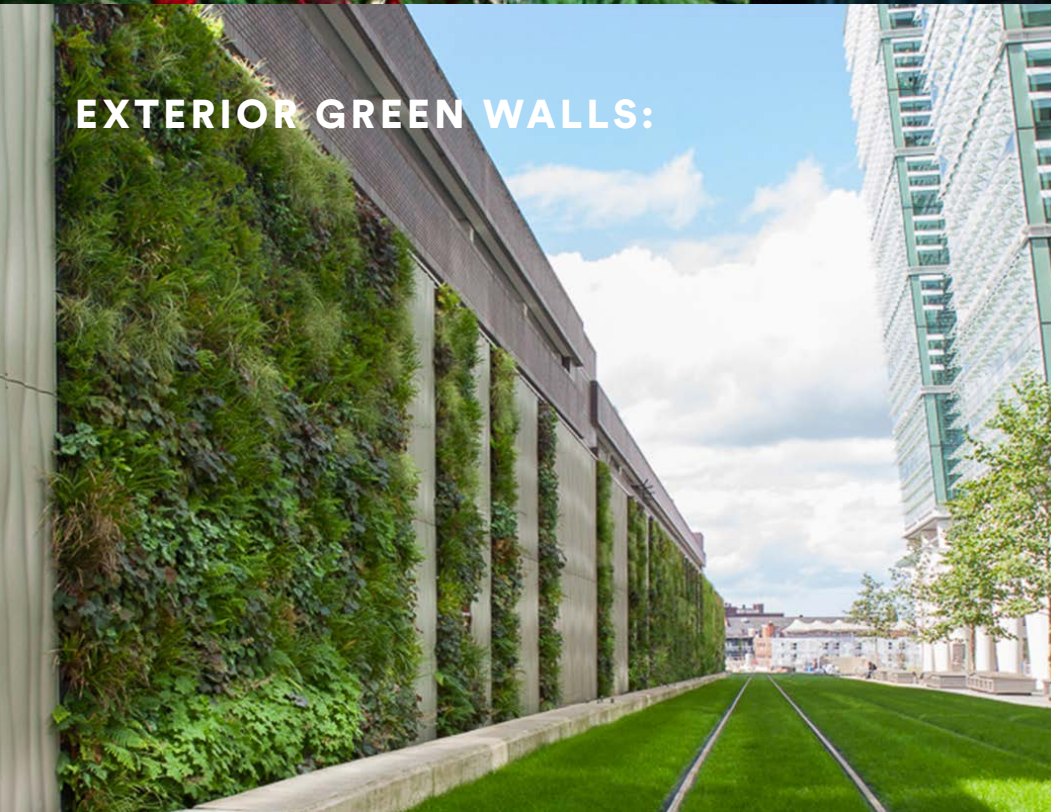
CHRISTMAS TREES:



WINTER GRITTING:



EXTERIOR GREEN WALLS:



CHRISTMAS DECORATIONS:



SERVICES

INTERIOR PLANTING:



ATIONS:



EXTERIOR PLANTING:



